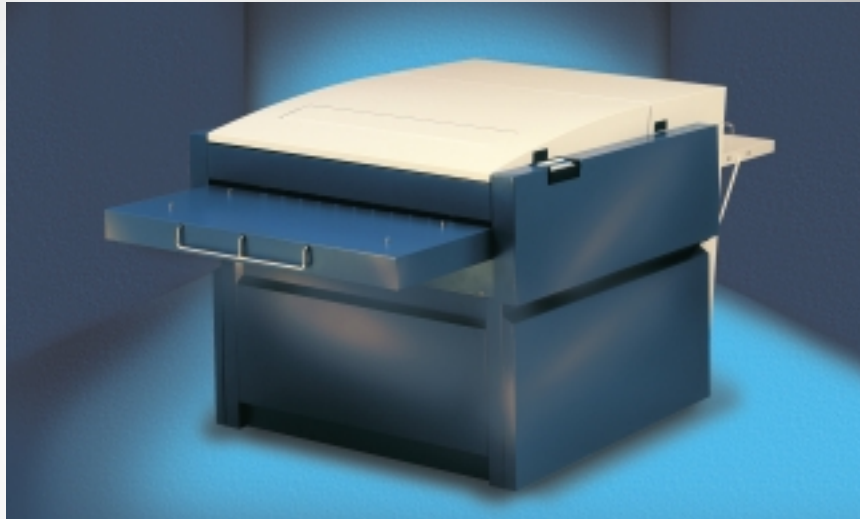


## InterPlater 85HD/135HD



### Reliable, heavy-duty plate processing

Designed on the basis of Glunz & Jensen's unique PlateTech concept, InterPlater HD plate processors develop single-sided positive and negative presensitised offset plates to a consistently high and uniform quality. InterPlater also develops most CTP Thermal plates on the market\*.

InterPlater HD plate processors can handle widths of up to 850 and 1350 mm (34" and 53") and a daily output of up to 300 m<sup>2</sup> (3,239 ft<sup>2</sup>). Their exceptional features thus make them the right choice for any customer whose operations require heavy-duty processing of uniform high quality, such as large, commercial and newspaper printers. Their attractive design allows the InterPlaters to fit into any environment - office as well as press room.

The unique and innovative developing section, DevoChamber (patent pending), guides the material through the process without risk of bending or buckling. At the same time, Devo-Chamber minimises oxidation and foaming, which reduces the use of chemicals significantly. Based on a new and unique modular concept, the InterPlater plate processor brings flexibility into the pre-press arena.

*The snap lock system makes removal of the rollers a very easy operation.*

*Roller pressure is adjusted at the factory and is not affected when rollers are removed. Any further adjustment is made simple by a scale on the roller snap locks.*



*The placing of the developer filter right under the top cover allows it to be removed easily. It also means that the tank system does not need to be emptied prior to filter removal. An optional range of filters meets all applications and needs.*

*The basic module - developer and rinse/gum/drying sections - can be separated, making moving through a standard doorway easy. The modular construction allows upgrade to CTP and interchange of various plate brands.*



*The heavy drives and gear wheels are just one visible sign of the sturdy design which ensures a long product life time with an absolute minimum of service, even with the most demanding of applications.*

\* Options needed

InterPlater 85HD / 135HD

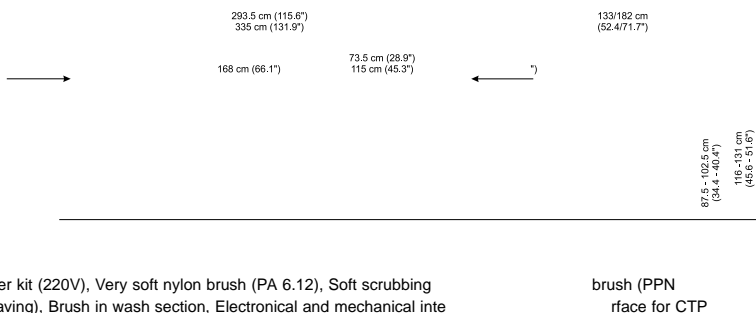
Type of plate	Positive/negative conventional or CTP Thermal plates	
Plate width	Max.	850 mm (33.5") / 1350 mm (53.1")
	Min.	311 mm (12.2") / 550 mm (21.7")
Plate length	Min.	330 mm (13.4")
Plate thickness	0.15-0.40 mm (0.006-0.016") / 0.20-0.50 mm (0.008-0.02")	
Processing speed	40-150 cm/minute $\pm 5\%$ (15.7-59.1"/minute $\pm 5\%$ )	
Tank contents, developer	43 l (11.2 US gal.) / 63 l (16.6 US gal.)	
Tank contents, gum	Recirculating from container	
Area replenishment amount	0-250 ml/m <sup>2</sup> $\pm 5\%$ (0-0.066 gal/m <sup>2</sup> $\pm 5\%$ )	
Water supply	Tapwater, pressure min. 1 bar / 15 psi	
Water consumption	Adjustable max. 10 l/min. (2.6 US gal.) (can be reduced by optional kit)	
Wash	Tapwater	
Adjustable temp., developer	18-40 °C $\pm 0.5$ °C (64-104 °F $\pm 0.9$ °F)	
	A cooling unit is recommended under certain conditions.	
Adjustable temp., dryer	30-55 °C $\pm 0.5$ °C (86-131 °F $\pm 0.9$ °F)	
Diameter of rollers	54 mm (2.1") / 69 mm (2.7")	
Dip length	38 cm (15")	
Dip length - to squeeze roller	45 cm (17.7")	
Brushes	Diameter: 55 mm (2.2")	
	Adjustable speed 40-130 rpm	
Filters	1 x 10" 150 micron	
Gum distribution	Flow tube and idler roller	
Warm up time max, developer	0.4 °C/min. (0.8 °F/min.)	
Level control in tank	Yes	
Height	950 mm $\pm 75$ mm (37" $\pm 3$ ")	
Weight, crated	550 kg (1,213 lbs) / 800 kg (1,764 lbs)	
Weight, non crated	325 kg (716 lbs) / 525 kg (1,157 lbs)	
Power supply	50-60Hz, 230/400V, 1/3	
Power consumption (max.)	5 kW / 5,7 kW	
Voltage tolerance	+/- 10%	
Approvals	UL, c-UL, and GOST-R certified. Complies with CE standards.	

Standard equipment: Rewash, Infeed and exit table, Closed stand, DevoChamber developing concept, PPN 0.1 scrubbing brush in developer section, Fully automatic replenishment system, Filtration unit with 150 micron filter in developer section, Automatic cleaning of gum section, Easy lift top cover (special hinges), Emergency stop

Optional accessories: Kit for negative development (extra brush in developer section), Fill pump (2-3L/MIN), Quick fill pump (6-8L/min (1.6-2.1gal/min)), Hand shower for cleaning, Extension of feed table, Trolley for waste or chemical containers, 140 micron reusable filter, Developer chiller kit (220V), Very soft nylon brush (PA 6.12), Soft scrubbing (0.08), Container alarm kit, Circulation in wash section (water saving), Brush in wash section, Electrical and mechanical inline installations

- Recommendations:
- It is recommended to add a chiller unit to ensure correct temperature in developer.
  - For CTP installations, remember to add a built-in interface.
  - For CTP thermal applications, a few options must be added.

Standard configurations may vary in the market. Specifications are subject to changes without prior notice.



brush (PPN  
rface for CTP