



A workflow solution for 2-page, 4-page, and entry-level 8-page CTP

Trueflow Rite is an entry-level workflow solution for Screen's 2-page, 4-page and entry-level 8-page CTP units. It is perfect for automated CTP operation with the PlateRite Micra, PlateRite 2055Vi, PlateRite 4100/4300, and PlateRite 8100 recorders, and can be upgraded to the JDF-capable Trueflow 3 workflow.

PlateRite Micra 2-page flatbed plate recorder



The PlateRite Micra is a 2-page (B3) format violet CTP recorder for users of 2-page presses that delivers high quality output and increases production efficiency. It offers all the benefits of CTP, including high-quality imaging, manual or fully automated operation, and optional inline punching, at an affordable price. The PlateRite Micra is available with a 5 mW exposure head for silver-violet plates or a 60 mW exposure head for photopolymer-violet plates.

PlateRite 2055Vi 4-page flatbed plate recorder



The PlateRite 2055Vi is a 4-page (B2) format violet CTP recorder for users of 4-page presses. It offers all the benefits of CTP, including high-quality imaging, manual or fully automated operation, and optional inline punching, at an affordable price. The PlateRite 2055Vi features a 60 mW exposure head for use with photopolymer-violet plates.

PlateRite 4100/4300 4-page thermal plate recorders



The PlateRite 4300 and 4100 are specially designed to provide optimal versatility in plate production for 4-page and 2-page presses. The PlateRite 4300 is a high-speed model providing output of up to 20 plates per hour, and the PlateRite 4100 is an affordable entry-level model that offers the same high-quality features as the PlateRite 4300 and output of up to 10 plates per hour. Both models employ Screen's proven external drum design and can be equipped with optional inline punching to ensure perfect on-press register and faster make-ready times.

PlateRite 8100 8-page entry-level thermal plate recorder



The PlateRite 8100 is an affordable entry-level external drum plate recorder designed for the B1 format printer, which offers the same high-quality features as the PlateRite 8000 series of 8-page thermal recorders and provides output of up to 8 plates per hour. Optional inline punching is available for perfect on-press register and faster make-ready times.

DAINIPPON SCREEN MFG. CO., LTD.

HEAD OFFICE
• Teranouchi-agaru 4-chome, Horikawa-dori, Kamigyo-ku, Kyoto, 602-8585 Japan/Phone +81-75-414-7610/Fax +81-75-414-7608
SCREEN (USA)
• 5110 Tolliver Dr., Rolling Meadows, IL 60008, USA/Phone 847-870-7400/Fax 847-870-0149 www.screenusa.com
DAINIPPON SCREEN (DEUTSCHLAND) GmbH
• Mündelheimer Weg 39, 40472 Düsseldorf, Germany/Phone 0211-472701/Fax 0211-4727199/Telex 858-4438 DSDD D
DAINIPPON SCREEN (U.K.) LTD.
• Michigan Drive, Tongwell, Milton Keynes, Buckinghamshire MK15 8HT, UK/Phone 01908-848500/Fax 01908-848501 www.screen.co.uk
SCREEN EUROPE
• Bouwerij 46, 1185XX Amstelveen, Holland/Phone 020-4567800/Fax 020-4567805 www.screen-europe.com
SCREEN FRANCE
• Z.I. Paris Nord II, 12 Rue des Chardonnerets, B.P. 50315, F-95940 ROISSY C.D.G., Cedex, France/Phone 1-48-17-86-00/Fax 1-48-17-86-01
DAINIPPON SCREEN SINGAPORE PTE. LTD.
• 29, Kaki Bukit View, Kaki Bukit Technopark II, Singapore 415963/Phone 7493833/Fax 7499010 www.screen-sp.com.sg
DAINIPPON SCREEN (CHINA) LTD.
• 8th Floor, 414 Kwun Tong Road, Kwun Tong, Kowloon, Hong Kong/Phone 2953-0038/Fax 2755-8683
Beijing office /Phone 010-8505-4974, 4976, 0405/Fax 010-8505-4975 (China)
Shanghai office/Phone 021-6466-4501/Fax 021-6466-4503 (China)
DAINIPPON SCREEN (TAIWAN) CO., LTD.
• 4F No. 126-1, Ming Tsau West Rd., Taipei, Taiwan/Phone 02-25862711/Fax 02-25914367
DAINIPPON SCREEN (KOREA) CO., LTD.
• 8th Yonsei Bongsae B/D 48-3, 1Ga, Bongsae-Dong, Joong-Gu, Seoul 100-161, Korea/Phone 02-7766-786/Fax 02-7766-787
DAINIPPON SCREEN (AUSTRALIA) PTY. LTD.
• Unit 2, 207-209 Young Street, Waterloo, NSW 2017, Australia/Phone 02-9310-1314/Fax 02-9310-3566

Internet web site www.screen-europe.com

• Trademarks and registered trademarks used herein are the property of their respective owners.

• This leaflet was printed using Spekta screening.



We reserve the right to alter product design and specifications without prior notice.

No.202-153 printed in Europe 04-09 6E

Trueflow Rite

Entry-level workflow

WORKFLOW



JDF ticket based entry-level CTP workflow automation

Trueflow Rite is A JDF ticket based entry level workflow with PDF1.4/1.5 Ripping capabilities, designed to provide those wishing to take the first steps into automated direct to plate production with basic workflow functionality.

Trueflow Rite features the basic functions necessary for CTP, such as JDF-based RIP operation, job ticketing, and trapping, and enables users to upgrade to the full, multi-feature version of Trueflow 3 as their requirements develop.

With the latest JAVA client interface technology, the intuitive graphical user interface for Trueflow Rite makes operation simple and fast. It offers on-screen previewing thumbnail images of page data during and after processing, as well as monitoring the job progress on any networked platform.

Trueflow Rite is equipped with hot folder automated process workflow, combined with the imposition module it offers a flexible late-binding job workflow. It helps minimize time wasted for today's short turnarounds of CTP production.

Upgrade to the full Trueflow 3 JDF-based workflow

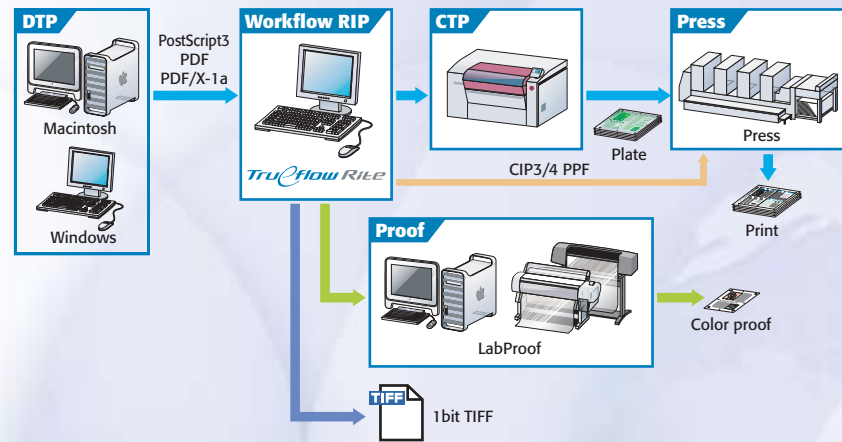
Trueflow Rite is fully upgradable to the fully featured Trueflow 3 which is a JDF enabled and fully automated prepress production workflow that delivers seamless communication with Management Information Systems (MIS), Prepress, press and Postpress operations.





Trueflow Rite

2-page, 4-page, and entry-level 8-page CTP workflows



File handling for networked CTP production

Trueflow Rite accepts standard PDF data files such as PDF/X1-a and PostScript 3 data files. Impositioned PDF and PostScript data can also be used in Job files. Trueflow Rite can easily repeat the plate file output for any job that has already been processed. Files can be output across a network if desired, and 1-bit TIFF files are supported for reliable data transfer to proofers. Trueflow Rite can also output CIP3/4 PPF ink-key preset data for press and post-press systems in an entry-level workflow.

A basic automated CTP workflow solution

Trueflow Rite architecture is designed on JDF based job tickets and PDF 1.4/1.5 interpreter technology as an entry-level version of the proven Trueflow workflow, it provides an automated 2-page, 4-page and entry 8-page CTP workflow solution with the basic functionality necessary for entry level CTP production.

Job ticketing and automated workflow paths

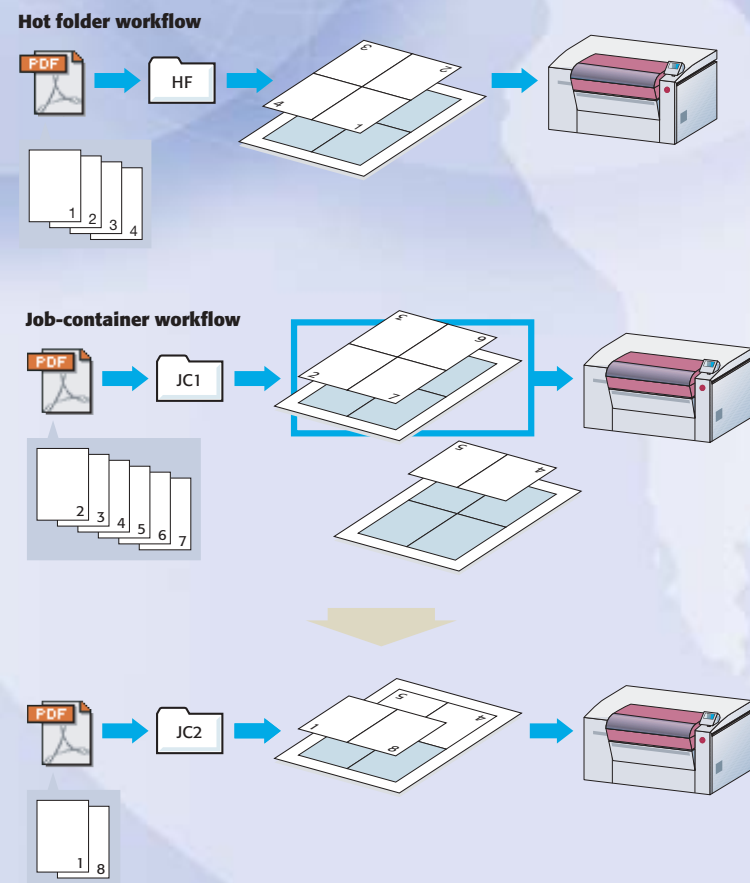
Trueflow Rite offers two automated workflow paths. All the operator needs to do is select the desired path for optimal production.

Hot folders

For output-ready jobs, Trueflow Rite uses a fully automated workflow involving intuitive job tickets and hot folders. Operators can use Trueflow's hot folders to create fully automated custom workflow paths. After the folders are created, operators simply drag and drop the job files into the appropriate hot folder; the remaining steps through output are carried out automatically.

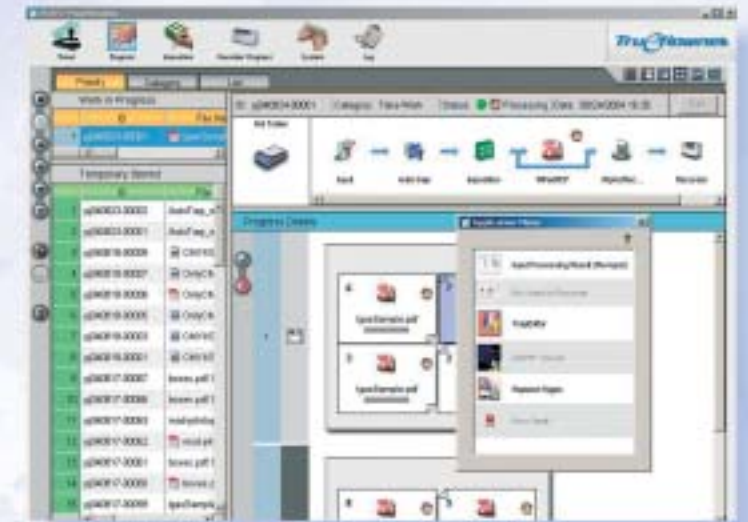
Job-container workflow

If some pages of a job are likely to arrive late, operators can use an intelligent job-container hot folder workflow with Trueflow Rite's plate imposition option. This workflow enables automated parallel processing of a large number of multiple page and page-independent late-binding files in an output-ready signature. The job-container workflow helps eliminate delays and assures consistent productivity for plate output ready jobs.



User-friendly "job-flow" graphical user interface

Trueflow Rite features a drag and drop "job-flow" style graphical user interface (GUI) that includes intuitive on-screen pop-up. The thumbnail view makes direct operation easy, and the simultaneous pop-up menu display of multiple applications increases operating efficiency. Job progress can be monitored in real time in networked environments. Trueflow Rite also offers a truly unique feature: e-mail notification of job progress for remote operators.



• GUI pop-up

Easy plate imposition

Trueflow Rite offers a plate imposition option for the CTP workflow. The plate imposition option features a wide range of imposition template editing tools, color control bars, and register marks. It operates with the same easy to use GUI as Trueflow 3. The plate imposition option makes it easy to set and edit plate signature settings for an imposition template, or to create output ready flat files for CTP and proofers. Imposition template data from the plate imposition option can be used both for hot folder operations and for job-container workflow operations.



• Imposition template

Spekta AM/FM hybrid screening

Trueflow Rite supports Screen's extensive screening library option, including the innovative Spekta AM/FM hybrid screening, high quality FM Randot X screening, and AM high frequency screening. This complete screening library offers the printer the ultimate in choice, quality, and reliability.

Spekta Hybrid screening



Randot X FM screening



AM screening

