



EverSmart Flatbed Scanners

Imaging excellence and high
productivity for professionals



- EverSmart Supreme
- EverSmart Select



creo™



EverSmart Scanners

imaging excellence and high productivity for professionals

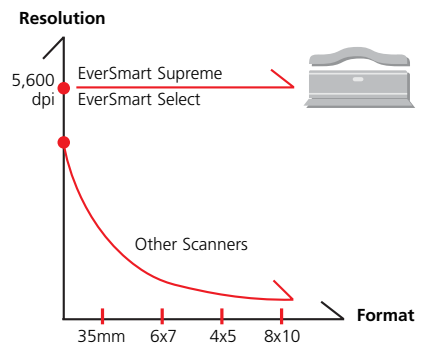
For the demanding needs of today's scanning-intensive graphic businesses, where maximum speed and excellent image quality are essential, EverSmart™ scanners are the answer. The top-of-the-line scanners from Creo, EverSmart Supreme and EverSmart Select deliver the ultra-high resolution, extended dynamic range and color depth that today's professionals require. With EverSmart scanners, unbeatable reliability, extreme sharpness and image detail go hand in hand with speed—you can quickly produce high volumes of scans to meet the tightest deadlines at the highest possible scanning performance.

Get consistent sharpness and resolution across the entire scanning bed with exclusive XY Stitch technology

Publication-quality scanning requires uniform sharpness and detail across the entire area of the smallest or largest originals—a feature that is available only with XY Stitch scanning technology from Creo. With XY Stitch, the scan head moves on both x and y axes for precise positioning directly below the center of each original. This assures consistent maximum resolution, regardless of where the original is placed on the scanning surface. With XY Stitch and the flexibility of the flatbed format, you can scan any image size, thickness,

material and format—even outsize enlargements, books, packages and more, with outstanding results.

With an industry-leading maximum scanning resolution of 14,000 dpi (5,600 dpi optical), and an enlargement range of up to 4660%, EverSmart scanners produce top-quality scans, giving you the creative freedom to produce poster-sized images, with no reduction in image quality.



XY Stitch scanning technology

XY Stitch assures high resolution, consistent sharpness and quality regardless of original size. Since other scanners cannot perform stitching, they use zooming, causing resolution to drop drastically as image size is increased.

Maximize productivity with high-speed processing and parallel workflow

With EverSmart scanners, superior imaging and high productivity go together. The large 12 x 17 in. (305 x 432 mm) scanning bed, advanced optics and high-speed processing mean you can scan up to seventy 35mm slides in one job, and run up to 65 scans an hour.

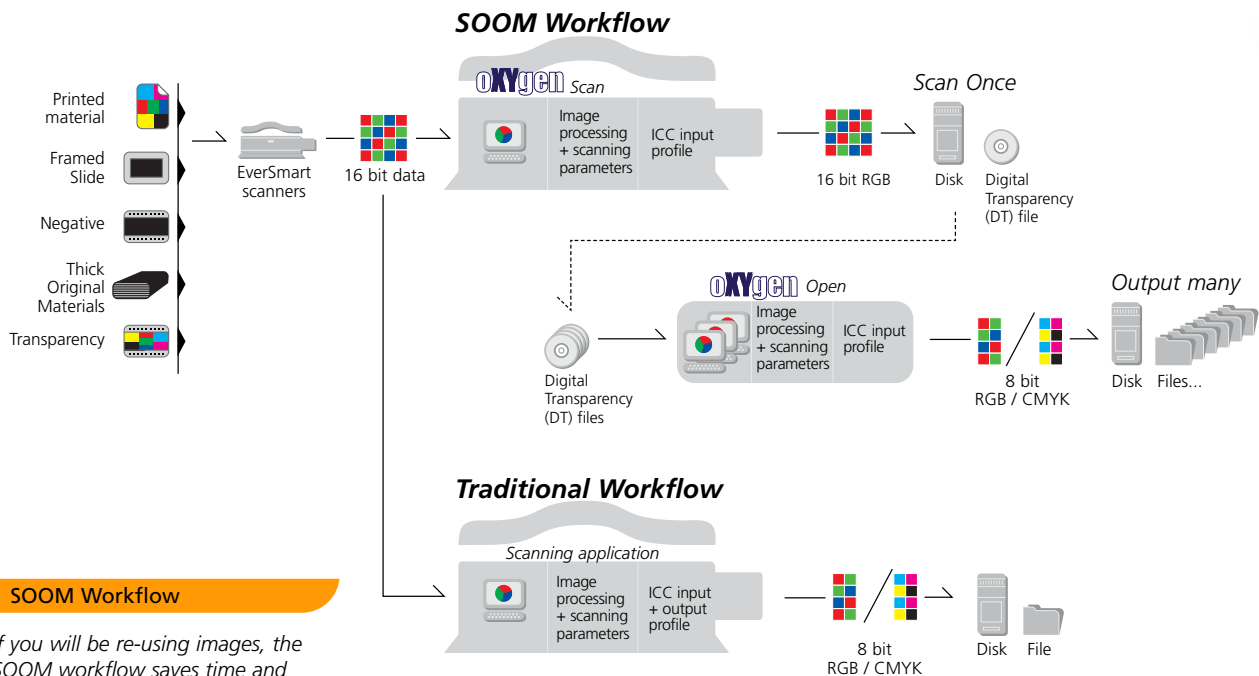
The EverSmart scanner parallel workflow means almost no “dead time” lost to setup: while the scanner captures and processes one scan, the operator has full access to the scanning software to preview and set up the next. The oXYgen software intuitive operation accelerates productivity while providing full control over image quality and scanning parameters so you can produce high-quality scans quickly and effortlessly.

Take complete control over scanning with oXYgen scanning application

The powerful oXYgen scanning application introduces a higher level of quality, versatility and efficiency to your scanning business. It provides an intelligent, workflow-oriented interface, with a comprehensive selection of scanning controls to help you achieve the exact results you want.

All controls are available in all scanning modes, including negative scanning. Intuitive presets deliver publication-quality results instantly. With the SmartSet feature, for example, the image is analyzed according to a choice of specific categories (people, still life, metal, outdoor, or any another category) and the scanning parameters are automatically set for an optimized image.

The 16-bit SOOM (Scan Once Output Many) workflow increases scanning efficiency and quality by capturing and saving images at maximum quality, for later re-use. With oXYgen software, you can scan for all types of workflows and output devices, including CMYK, RGB, true 16-bit-color, and online applications. ICC color management assures that color is consistent across the entire workflow. You get complete predictability of results: scans are automatically color-matched to the output device. With ICC output profiling, you preview the scan results on the output device and fine-tune the scan to get the results you want, the first time.



SOOM Workflow

If you will be re-using images, the SOOM workflow saves time and avoids re-scanning. Both traditional and SOOM workflows are available.



EverSmart Supreme Scanner

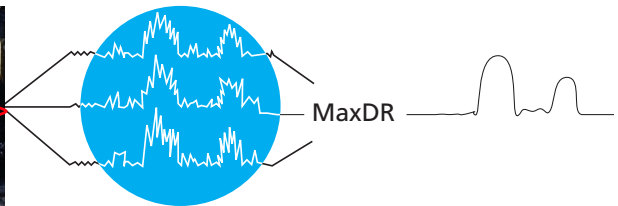
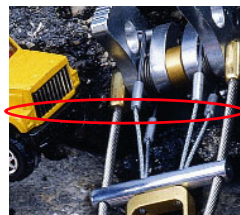
step up to first class scanning

The EverSmart Supreme scanner is designed for the most demanding jobs, including enhanced shadow detail. Innovative scanning technologies, including XY Stitch, CCD dynamic cooling and MaxDR, assure maximum detail from every area of the original artwork. The EverSmart Supreme scanner includes the oXYgen scanning application, which saves the scanned image as a pure 16-bit digital transparency, so you can retrieve and reuse it with top quality and complete predictability.

The EverSmart Supreme scanner utilizes a CCD dynamic cooling system to optimize the sensitivity of the CCD, thus reducing visible

artifacts, enabling it to differentiate a wider range of color tones. Continually monitoring ambient temperature and humidity, the system actively cools the CCD to maintain the optimum operating temperature, for top-quality images with maximum shadow detail. The MaxDR (Maximum Dynamic

Range) feature distills high-quality image data from additional scanned data to improve the dynamic range in dark to mid-tone areas. The combination of CCD Dynamic Cooling and MaxDR results in a maximum density value of 4.3, indicating the scanner ability to capture superb shadow detail.



MaxDR (Maximum Dynamic Range)

Each line of an image is sampled three times or more; the samples are averaged to produce high-quality data, resulting in clean, sharp images.

EverSmart Select Scanner

fulfilling your every professional scanning need

The EverSmart Select scanner combines professional quality and durability. A sophisticated, robust and efficient scanner, it delivers production-quality scans quickly. The large scanning bed accommodates any kind of original, and XY Stitch scanning technology assures customer satisfaction with maximum resolution and sharpness. The included oXYgen scanning

application provides powerful editing and color management tools that accelerate production, boost efficiency, and access the full potential of the EverSmart Select. This scanner is built to be the reliable hub of a high-quality, high-productivity scanning and image-processing business that can quickly satisfy any customer request.



EverSmart Select scanner

oXYgen Scanning Application

powerful, flexible and easy to use

oXYgen is the premium scanning and image-editing application from Creo, developed to deliver the maximum in productivity and imaging potential. Intuitive controls, automation, and intelligent default settings put imaging power in the hands of novices and experienced professionals alike. oXYgen quickly and effortlessly guides operators through the process of creating sharp, dynamic images from the broadest variety of input sources, for the largest selection of output requirements.

oXYgen features (partial list)

Features are available in all modes

Full 16-bit Digital Transparency (DT) files

16-bit DT files contain the highest reproduction quality of the original, enabling rapid re-purposing for print, screen or the Web.

SOOM (Scan Once, Output Many) workflow

Increases productivity and efficiency, enabling you to scan an image once, and save it as a 16-bit DT file that can be repurposed for as many different uses as required—without the need for re-scanning.

SmartSet feature

Enables you to achieve print-ready quality with a single keystroke. SmartSet automatically adjusts the scanning parameters of an image according to preset input categories

Full ICC color management

Uses input and output color profiles to accurately manage color characteristics across the workflow. ICC profiles improve predictability, with previews of results and simulations of output on various devices.

Automatic endpoint control & color cast removal

Maximizes image quality

Split screen views

Provides side-by-side before and after viewing of each change performed with the oXYgen scanning features

Full-resolution preview with max detail

Enables you to assess the effects of different levels of sharpness on the scan results.

Direct scan

Accelerates scanning time by allowing you to skip the preview stage and send images directly to final scan.

Automatic sharpness control

Provides ease of use and sophisticated adjustments for complete control.

EverSmart Scanner Options

Oil Mounting Station

offline oil mounting for increased productivity and image quality

Preserve the quality of your scanned images with the Oil Mounting Station for Creo flatbed scanners. Bathing film in scanning oil conceals cracks and scratches, and is recommended for images that will be enlarged by 800% or more. Using the Oil Mounting Station saves retouching time and operational costs while reducing the apparent grain of the original image. To increase productivity, originals are mounted offline without interrupting scanner operation.



Oil Mounting Station

Professional offline oil mounting system enhances image quality and productivity

oXYgen Open software increase productivity with offline workstations

oXYgen Open software boosts your productivity and efficiency by extending the 16-bit oXYgen workflow to any workstation.

With oXYgen Open software, 16-bit DT images can be opened and repurposed at any location without the need for a scanner. You can use a full range of professional editing tools to edit images, change output parameters, and make color enhancements.

oXYgen DOT Solution professional-quality copydot scanning

With the oXYgen DOT solution and an EverSmart scanner, you can add copydot scanning and digital descreening to your customer offerings. Based on advanced algorithms from Creo Renaissance premium copydot scanners, the oXYgen DOT solution brings professional copydot scanning performance to color scanners.



EverSmart Scanner Options (cont.)

oXYgen DOT Solution (cont.)

The oXYgen DOT Solution is composed of two applications, oXYgen DOT and the oXYgen DOT Toolkit. oXYgen DOT is a scanning application that digitizes the screened films to deliver superb

copydot and descreened quality. The Toolkit provides advanced functions for customizing the image for any purpose or output device—such as automatic registration, bitmap editing, resampling, tone calibration, digital

descreening and more. Together, they provide a complete copydot scanning solution, enabling a SOOM workflow for re-purposing halftone film for any output device, as many times as needed.



Iris® Proof

Newspaper

With ICC soft proofing, you can quickly preview the scan appearance on a range of different output devices

Selected features

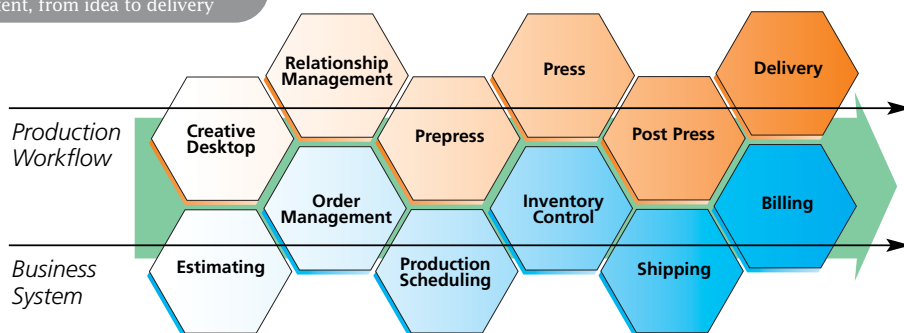
	EverSmart Supreme	EverSmart Select
Features	<ul style="list-style-type: none"> • flatbed CCD scanner • tri-linear 8,000 element; anti-blooming CCD; up to 67,100 pixels per line • XY Stitch scanning technology • scans any type of original: transparent (positive and negative), reflective, framed slides, line art, printed material, halftone screened films 	
	<ul style="list-style-type: none"> • MaxDR function • CCD Dynamic Cooling 	No
Maximum resolution (optical)	5,600 x 14,000 dpi	5,600 x 11,400 dpi
Light table	Built in	Built in
Maximum resolution (interpolated)	14,000 dpi	11,400 dpi
Maximum enlargement	4660%	3800%
Color depth	48 bits (16 bits per color)	48 bits (16 bits per color)
Maximum density	4.3	4.1
Density Range	4.0	3.9
Scans per hour*	65 (batch mode)	45 (batch mode)
Scanning area	12 x 17 in. (305 x 432 mm)	12 x 17 in. (305 x 432 mm)
Software included	oXYgen scanning application	oXYgen scanning application
Options	<ul style="list-style-type: none"> • oXYgen Open application • oXYgen DOT solution 	• Oil Mounting Station
Software platform	Macintosh® OS 9.0 / OS X Classic compatible	

* 6 x 7 cm original, 250%, 300 dpi, standard mode, using Macintosh G4 500 MHz computer

Networked Graphic Production from Creo

Connecting people, process and content, from idea to delivery

Networked Graphic Production links creative, production, and business technologies to make printing more streamlined and to better serve everyone involved in the print process. Tightly integrating Creo and partner technologies, Networked Graphic Production is an ongoing development that promises:



Improved Customer Service

by using the Internet for online quoting, job submission, project collaboration, as well as online proofing, change requests and approvals. Online communication saves courier and travel costs, reduces production delays, and provides a record of each interaction.

Streamlined Production Management

with all systems tied into one database-driven network to track every transaction. Resource planning is simplified, billing errors and change orders are reduced, while automatic load balancing optimally allocates jobs to operators and equipment.

Integrated Production and Business Systems

increase efficiency, collaboration and coordination by merging information about scheduling, invoicing, billing, and purchasing into the production network.

Optimized Press-ready File Creation

with automated software tools, designers and prepress shops can reduce the cost of errors and the delays to repair files.

Automated Content Management

provides software tools for regionalization, versioning, personalization, job-based archiving, and re-purposing of print and electronic publishing. An integrated production network will provide quick access to online digital assets, such as image libraries, templates, and reprint jobs.

Creo Customer Services

helping you profit from your Creo solution

Whatever the extent or complexity of your needs, our experts in support, technical education and service can help you plan, install, manage and grow your prepress system. We have installed over 12,000 professional scanners, and more than 2,500 CTP and 9,000 CTF systems, each one uniquely developed for specific production requirements.

Expert service means faster deployment

Our service teams will get you up and running sooner, with a solution that's designed with your business and operational needs in mind.

Professional training for greater productivity

Our prepress training programs are among the most comprehensive in the industry.

Uptime support maintains production levels

Our comprehensive, personalized support plans can help maintain optimum performance and productivity to meet your uptime needs. We focus on failure prevention, software and firmware enhancements and technical assistance, whenever and wherever you need it.

Let's Talk

Contact your Creo representative to see how professional scanning and workflow capabilities of EverSmart scanners can deliver the image quality and production speed that your business requires.

www.creo.com/scanners

About Creo

Creo (NASDAQ:CREO; TSE:CRE) is the world's largest independent supplier of prepress systems, with sales and support offices across the globe. Creo produces digital photography equipment; professional color and copydot scanning systems; variable information workflow systems; inkjet and halftone digital proofers; computer-to-film and computer-to-

plate devices; color servers for print-on-demand digital printers, and a comprehensive range of workflow, business management, networking, variable information, and creative software products. Creo is also an OEM supplier of on-press imaging technology and components for digital presses.

© 2002 Creo Inc. The products mentioned in this document are trademarks or service marks of Creo Inc. and may be registered in certain jurisdictions. Other company and brand, product and service names are for identification purposes only and may be trademarks or registered trademarks of their respective holders. Data subject to change without notice.

Produced using Creo technology



www.creo.com

Creo Inc.

3700 Gilmore Way
Burnaby, British Columbia
Canada V5G 4M1
T. +1.604.451.2700
F. +1.604.437.9891

Creo Americas, Inc.

Eight Oak Park Drive
Bedford MA 01730
USA
T. +1.781.275.5150
F. +1.781.275.3430

Creo Asia Pacific Ltd.

3/F 625 King's Road
North Point
Hong Kong
T. +852.2882.1011
F. +852.2881.8897

Creo Europe, S.A.

Waterloo Office Park
Drève Richelle 161
B-1410 Waterloo
Belgium
T. +32.2.352.2511
F. +32.2.351.0915

Creo IL Ltd.

P.O. Box 330
Herzlia Industrial Park
46103 Herzlia B
Israel
T. +972.9.959.7222
F. +972.9.950.2922

Creo Middle East/Africa

P.O. Box 330
Herzlia Industrial Park
46103 Herzlia B
Israel
T. +972.9.959.7585
F. +972.9.959.7787

Creo Japan Inc.

Ikebukuro TG Homest Bldg.
1-17-8, Higashi-Ikebukuro
Toshima-ku, Tokyo
170-0013, Japan
T. +81.3.5954.9050
F. +81.3.5954.9055